

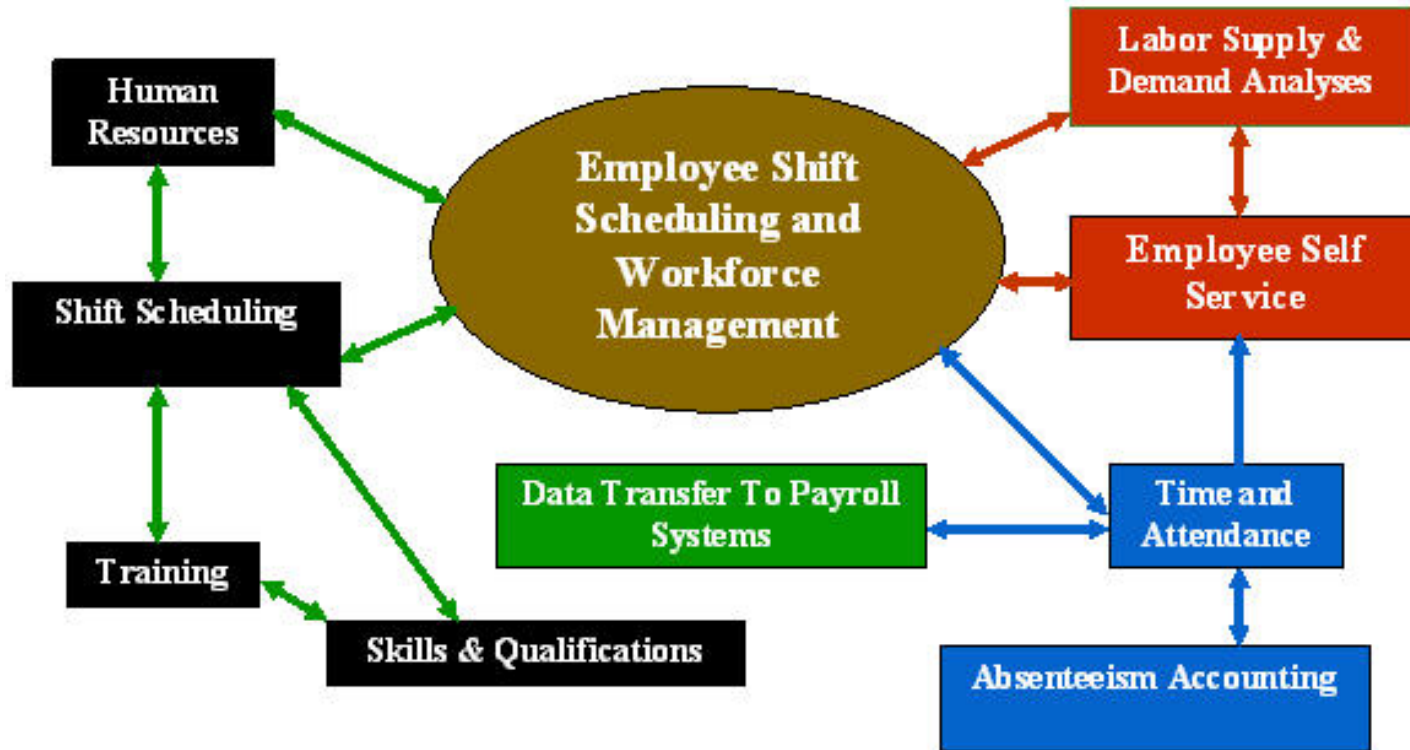


“Hatrak Schedulers”

Since
1983

The Best in Employee Scheduling Software

A FULLY INTEGRATED SOLUTION





“Hatrak Schedulers”

Since
1983

The Best in Employee Scheduling Software

Click on an list item to go directly to that slide

Text Slides

[Scheduling The Right People To The Right Place At The Right Time](#)

[Hatrak Scheduler: Offer A Better Way!](#)

[Hatrak Schedules: Use The Right Business Processes](#)

[Hatrak Schedulers: Employee Shift Scheduling Major Variables Illustrated](#)

[Management Dilemma: Illustration](#)

[Hatrak Schedulers: Major Feature – Page 1](#)

[Hatrak Schedulers: Major Features – Page 2](#)

[Hatrak Schedulers: Employee “Win / Win”](#)

[Hatrak Schedulers: Management Benefits](#)

[Hatrak Schedulers: Before You Purchase](#)

Screen Shots

[Screen Shot: Pattern-Based Master Schedule View](#)

[Screen Shot: Hatrak Scheduler \(HTML Format\) Master Schedule Report](#)

[Screen Shot: Hatrak Scheduler Sample Daily Schedule View](#)

[Screen Shot: Hatrak Scheduler \(HTML Format\) Daily Report](#)

[Screen Shot: Hatrak Scheduler: Daily Schedule Exceptions Wizard View](#)

[Screen Shot: Hatrak Schedulers: Employee Self-Service Calendar View](#)



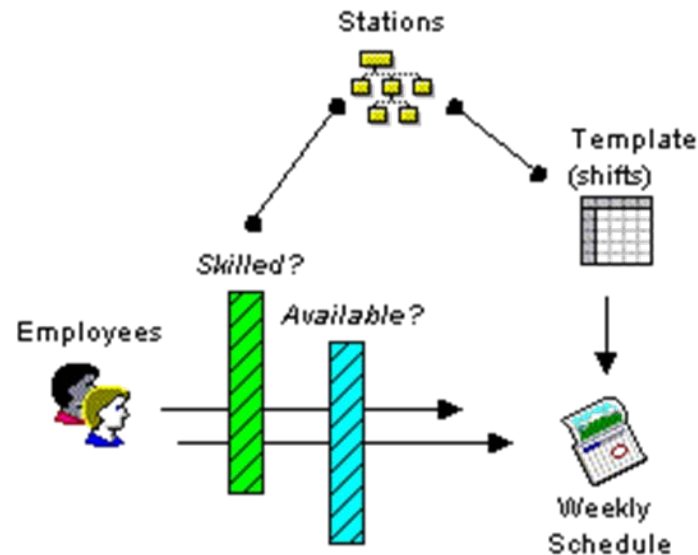
“Hatrak Schedulers”

Since
1983

The Best in Employee Scheduling Software

With Hatrak Schedulers

Scheduling the Right People to the Right Place at the Right Time is Easy



Return to Menu



“Hatrak Schedulers”

Since
1983

The Best in Employee Scheduling Software

**ARE YOU USING A “STUBBY PENCIL” OR A SPREADSHEET
TO DO COMPLICATED SHIFT SCHEDULING?**

There is a better way!

Hatrak Schedulers make employee shift scheduling easy

**The Change
Process Is
TOO
Difficult!**



Step Out of the Box Now!



Return to Menu



“Hatrak Schedulers”

Since
1983

The Best in Employee Scheduling Software

Hatrak Scheduler's Are Successful Because They Maximize The Right Business Processes!

1. The Right Scheduling Engines (Pattern-Based and Employee Self Scheduling)
2. Rules Based: The Scheduling Engines Use Your Rules
3. The Right Labor Supply and Demand Business Processes and “GAP” Analysis
4. Right Absenteeism and Planned Leave “Budget-Buster” Controls
5. The Right Technology: Classy Flash User Interfaces

Return to Menu



“Hatrak Schedulers”

Since
1983

The Best in Employee Scheduling Software

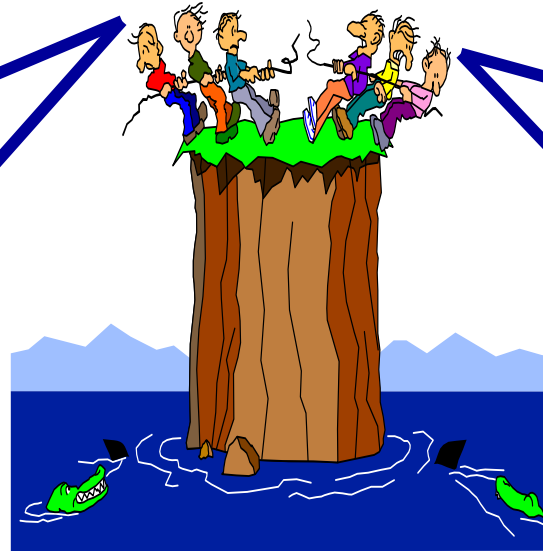
EMPLOYEE SHIFT SCHEDULING - THE MAJOR VARIABLES



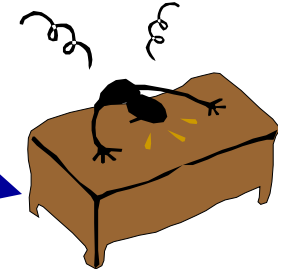
**PEOPLE
AND
MONEY**



**SHIFT &
SCHEDULE
DESIGN**



**DON'T LET THE SHARKS GET IN YOUR WAY
AVOID LOSE / LOSE SOLUTIONS**



POSTS / POSITIONS



**EMPLOYEE DEPLOYABLE AND
NOT DEPLOYABLE DAYS
AVERAGES APPLIED TO
SCHEDULING ENGINES**

HATRAK SCHEDULERS HELP YOU

ESTABLISH ESTABLISH WIN / WIN STRATEGIES

Return to Menu

Hatrak Schedulers

Scheduling Made Easy



“Hatrak Schedulers”

Since
1983

The Best in Employee Scheduling Software

MANAGEMENT DILEMA! TOO LITTLE MONEY! TOO FEW PEOPLE!

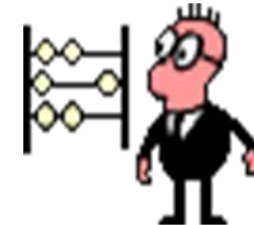
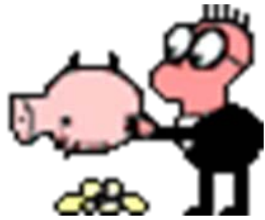
REFERRED AS TO THE SUPPLY AND DEMAND “GAP”

PEOPLE AND MONEY (LABOR SUPPLY)

MONEY BUDGETED	PEOPLE BUDGETED
\$10,939,629	188

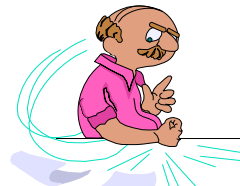
POSTS / POSITIONS – DEPLOYABLE DAYS
FACTORS – (LABOR DEMAND)

MONEY DEMAND	PEOPLE DEMAND
\$12,181,892	206.466



Increase money and / or people

Adjust (+/-) positions and / or deployable days



Some of each!

My way or
the highway!

Do nothing!

Return to Menu

Hatrak Schedulers

Scheduling Made Easy



“Hatrak Schedulers”

Since
1983

The Best in Employee Scheduling Software

Hatrak Scheduler Software Features

- Powerful and proven Pattern-based and Employee Self Scheduling Engines
- Drag and drop data entry
- On-line leave and overtime request calendars and other employee self service features
- Labor supply / demand reporting that help forecast, manage, and analyze costs (“GAP” Analysis with options for resolving)
- Easy to setup and use
- Schedule an unlimited number of shifts, schedule patterns, departments, scheduling units, holiday lists, employee not deployable reasons, positions (posts), employees and more
- The software fully integrates scheduling with employee skills, licenses, certifications and other requirements
- Help schedule the right person to the right place at the right time
- Training records management
- Human Resources, Time and Attendance and Payroll
- Accounts Receivable and Payable

Return to Menu



“Hatrak Schedulers”

Since
1983

The Best in Employee Scheduling Software

Hatrak Scheduler Software Features

- Employees enter / view leave requests, schedules, overtime history, leave history and sign up for voluntary overtime
- Employee Self Scheduling using your scheduling rules
- Scheduler helps find and assign qualified staff from other tables, relief pools, and scheduling units when appropriate
- Scheduled vs. actual labor supply / demand cost (“GAP”) analyses
- Maintain current relevant employee information directly or by interfacing with your human resources system
- Track absenteeism, sick calls and other reasons why employees are not deployable and uses the data to calculate cost projections
- Pre-programmed reports
- Fully integrated with time and attendance and payroll
- Employee real-time leave monitoring
- Supervisors perform scheduling tasks on-line
- Schedule from anywhere at any time

Return to Menu



“Hatrak Schedulers”

Since 1983

The Best in Employee Scheduling Software

Hatrak Scheduler Pattern-Based Sample Master Schedule

File Setup Resources Analysis Scheduling Time & Attendance Training Administration Ver 1.0

MASTER ROSTER ASSIGNMENTS

Select Hierarchy Start Day: All Days Shift: 2 Select Mode Drag Mode

Search Position Records: Fetch 1-300 Rows Show ALEXANDER ,DEBRA (626)

BAILEY ,PEGGY (822)

BAKER ,PATRICIA (735)

<< < 1/9 > >> << < 1/4 > >> 🔍

POSITION	SHIFT	MONDAY	TUESDAY	WEDNESDAY
SHIFT LT 3-X	2	1400-2200:CLARKSENIOR ,DOROTHY	1400-2200:CLARKSENIOR ,DOROTHY	1400-2200:CLARKSENIOR ,DOROTHY
SERGEANT				
6FL/5FL/GYM-Y	2	1400-2200:RANDOLPH ,MARY	1400-2200:RANDOLPH ,MARY	1400-2200: BENSON ,WILLIA
4FL - NO - Y	2	1400-2200:GREGORY ,YLAND	1400-2200:GREGORY ,YLAND	1400-2200:RANDOLPH ,MAR
4FL - SO - Y	2	1400-2200:BRYANT ,LOUIS	1400-2200:BRYANT ,LOUIS	1400-2200:BRYANT ,LOUIS
3FL - NO - Y	2	1400-2200:BERNARD ,CHERYL	1400-2200:JACKSON ,HAROLE	1400-2200:JACKSON ,HAROI
3FL - SO - Y	2			

Regular day off Relieved(RR) Regular day off Not Relieved(RNR)
 Regular Work day Relieved(WR) Regular Workday Not Relieved(WNR)
 Position does Not Operate(NS) Regular day Off(O)/Work day(W) default

Save Roster Print Clear Exit

Hatrak Scheduler Plus - A "Quick And Easy" Employee Scheduling Solution

Legend describe the day of the week cells on the Schedule

Return to Menu

Hatrak Schedulers

Scheduling Made Easy



“Hatrak Schedulers”

Since
1983

The Best in Employee Scheduling Software

Hatrak Scheduler (HTML Format)

Sample Master Schedule Report

HATRAK SCHEDULER PLUS									
MASTER ROSTER									
SCHEDULING UNIT : DOWNTOWN JAIL SECURITY									
Thu 01, Feb 2007 10:45:03 AM									
POSITION	SHIFT	MON	TUE	WED	THU	FRI	SAT	SUN	EMPLOYEE
CAPTAIN									
SHIFT COMM - W	1	WNR 461	WNR 461	WNR 461	WNR 461	WNR 461	RNR 461	RNR 461	MCGHEE ,CHARLINE 461
SHIFT COMM - W	2	WNR 367	WNR 367	WNR 367	WNR 367	WNR 367	RNR 367	RNR 367	BURKS ,DIMITRA 367
SHIFT COMM - W	3	WNR 408	WNR 408	WNR 408	WNR 408	WNR 408	RNR 408	RNR 408	KINNEY ,GROVER 408
LIEUTENANT									
ASST SH/COMM-X	1	WNR 3040	WNR 3040	WNR 3040	WNR 3040	WNR 3040	RNR 3040	RNR 3040	HARRIS ,DESDEMONA 3040
ASST SH/COMM-X	2	WNR 25	WNR 25	WNR 25	WNR 25	WNR 25	RNR 25	RNR 25	ESTER ,CALVIN 25
ASST SH/COMM-X	3	WNR 1258	WNR 1258	WNR 1258	WNR 1258	WNR 1258	RNR 1258	RNR 1258	BAILEY ,PEGGY 822
SHIFT LT 1-X	1	WNR	WNR	WNR	WNR	WNR	RNR	RNR	
SHIFT LT 1-X	2	WNR	WNR	WNR	WNR	WNR	RNR	RNR	
SHIFT LT 1-X	3	WNR 695	WNR 695	WNR 695	WNR 695	WNR 695	RNR 695	RNR 695	ROBINSON ,JAMES 695

[Return to Menu](#)

Hatrak Schedulers

Scheduling Made Easy



“Hatrak Schedulers”

Since
1983

The Best in Employee Scheduling Software

Hatrak Scheduler Sample Daily Schedule

File Setup Resources Analysis Scheduling Time & Attendance Training Administration **Ver 1.0**

DAILY ROSTER ASSIGNMENTS (SHIFT WISE) Select Mode Drag Mode

Select Hierarchy Designation View All Designations View All Shifts ALEXANDER ,DEBRA (626)
 Search Position Records Fetch 1-300 Rows 12/25/2007 BAILEY ,PEGGY (822)
 BAKER ,PATRICIA (735)

<< < 1/21 > >> Show <<< < 1/2 > >>>

Position	1 (0600-1400)	2 (1400-2200)	3 (2200-0600)
Designation: CAPTAIN			
SHIFT COMM - W	0600-1400:MCGHEE ,CHARLINE	1400-2200:BURKS ,DIMITRA	2200-0600:KINNEY ,GROVER
1FL-LOB-DR-Z	0600-1400:FAULKNER ,KENNETH	1400-2200:BLOCKER ,AARON	2200-0600:MACKLIN ,SHAWN
Designation: LIEUTENANT			
ASST SH/COMM-X	0600-1400:HARRIS ,DESDEMONA	1400-2200:ESTER ,CALVIN	2200-0600:DYER ,JAMES 2200-0600:BAILEY ,PEGGY
SHIFT LT 1-X			2200-0600:ROBINSON ,JAMES

Regular day off Relieved(RR) Regular day off Not Relieved(RNR)
 Regular Work day Relieved(WR) Regular Workday Not Relieved(WNR)
 Position does Not Operate(NS) Regular day Off(O)/Work day(W) default

Clear Reports Save Exit

Hatrak Scheduler Plus - A "Quick And Easy" Employee Scheduling Solution

Hatrak Schedulers

Scheduling Made Easy

Return to Menu



“Hattrak Schedulers”

Since
1983

The Best in Employee Scheduling Software
Hattrak Scheduler (HTML Format)
Sample Daily Schedule Report

HATRAK SCHEDULER PLUS			
DAILY SCHEDULE REPORT			
SCHEDULING UNIT :DOWNTOWN JAIL SECURITY			
Date :12/25/2007			
			Thu 01, Feb 2007 10:50:21 AM

POSITION	1 (0600-1400)	2 (1400-2200)	3 (2200-0600)
Designation : CAPTAIN			
SHIFT COMM - W	MCGHEE ,CHARLINE	BURKS ,DIMITRA	KINNEY ,GROVER
1FL-LOB-DR-Z.	FAULKNER ,KENNETH	BLOCKER ,AARON	MACKLIN ,SHAWN
Designation : LIEUTENANT			
ASST SH/COMM-X	HARRIS ,DESDEMONA	ESTER ,CALVIN	DYER ,JAMES BAILEY ,PEGGY
SHIFT LT 1-X			ROBINSON ,JAMES
SHIFT LT 2-X	RICHMOND ,MARGUERITE	FELIX ,IMOGENE	WOODS ,DEIDRA
SHIFT LT 3-X		CLARKSENIOR ,DOROTHY	BAKER ,PATRICIA
Designation : SERGEANT			
6FL/5FL/GYM-Y	PHILLIPS ,ALICE	BENSON ,WILLIAM	
5&6 FL-Y			NATHANIEL ,ERNEST
4FL - NO - Y		RANDOLPH ,MARY	
4FL-NO/SO-Y			MOORE ,MAC
4FL - SO - Y	LEE ,ROOSEVELT	BRYANT ,LOUIS	
3FL - NO - Y	TAYLOR ,MICHAEL	JACKSON ,HAROLD	
3FL - SO - Y			

[Return to Menu](#)



“Hatrak Schedulers”

Since 1983

The Best in Employee Scheduling Software

Hatrak Employee Self Scheduling Wizard

File Setup Resources Analysis Scheduling Time & Attendance Training Administration Ver 1.0

FREE FORM EXCEPTION HANDLER

Select Hierarchy Shift: View All Shifts

Search Position Roster Date: 12/25/2007 Show

Select Mode Drag Mode
 ALEXANDER ,DEBRA
 BAILEY ,PEGGY
 BAKER ,PATRICIA

Page 1/47 Page 1/4

POSITION	SHIFT	CLASS	ASSIGNED EMPLOYEE	EXCEPTION	TIME START-END	TOTAL Hrs.	REPLACEMENT	RECORD EVENT	RECORD ACTION
CAPTAIN									
SHIFT COMM - W	1	MOV	MCGHEE ,CHARLINE	WNR	0600 - 1400	8.00	---	CREATE EVENT	---
SHIFT COMM - W	2	MOV	BURKS ,DIMITRA	WNR	1400 - 2200	8.00	---	CREATE EVENT	---
SHIFT COMM - W	3	MOV	KINNEY ,GROVER	WNR	2200 - 0600	8.00	---	CREATE EVENT	---
1FL-LOB-DR-Z.	1	NA	FAULKNER ,KENNETH	WR	0600 - 1400	8.00	---	CREATE EVENT	---
1FL-LOB-DR-Z.	2	NA	BLOCKER ,AARON	WR	1400 - 2200	8.00	---	CREATE EVENT	---
1FL-LOB-DR-Z.	3	NA	MACCLIN ,SHAWN	WR	2200 - 0600	8.00	---	CREATE EVENT	---
LIEUTENANT									
ASST SH/COMM-X	1	MOV	HARRIS ,DESEMONA	WNR	0600 - 1400	8.00	---	CREATE EVENT	---
ASST SH/COMM-X	2	MOV	ESTER ,CALVIN	WNR	1400 - 2200	8.00	---	CREATE EVENT	---
ASST	3	MOV	DYER ,JAMES	WNR	2200 - 0600	8.00	---	CREATE EVENT	---

Regular day off Relieved(RR) Regular day off Not Relieved(RNR)
 Regular Work day Relieved(WR) Regular Workday Not Relieved(WNR)
 Position does Not Operate(NS) Regular day Off(O)/Work day(W) default

Clear Save Print Exit

Hatrak Scheduler Plus - A "Quick And Easy" Employee Scheduling Solution

Return to Menu

Hatrak Schedulers

Scheduling Made Easy



“Hattrak Schedulers”

Since
1983

The Best in Employee Scheduling Software

Hattrak Scheduler Sample Employee Self-Service Calendar

The screenshot displays the Hattrak Scheduler Plus interface. At the top, there is a menu bar with options: File, Setup, Resources, Analysis, Scheduling, Time & Attendance, Training, Administration, and Ver 1.0. Below the menu is a search area where 'SHELBY' and 'DOWNTOWN JAIL' are listed. A dropdown menu shows employee names: AESCHLIMAN, PATRICK; ALEMU, HAILEMARIAM (highlighted with callout 1); ALEXANDER, DEBRA; and ALLEN, CASSANDRA. To the right, there are options to 'View Overtime Worked', 'View Employee Profile', and 'View Employee Exceptions' (callout 2). The main area is a calendar for December 2006. An assignment for ALEMU, HAILEMARIAM is shown on Friday, Dec 1st, from 0600-1400 (callout 3). Another assignment is shown on Thursday, Dec 7th, from 2200-0600. A detailed view of the Friday assignment is shown on the right, listing '1. Position: ADMIN SEG SGT, Shift: 2, From Time: 1400, To Time: 2200' and '2. Position: 4FL-A SECZ, Shift: 1, From Time: 0600, To Time: 1400' (callout 4). Below the calendar, there are buttons for 'Cancel Event', 'Switch To INBOX VIEW' (callout 5), and 'Make New Request'. At the bottom, it says 'Hattrak Scheduler Plus - A "Quick And Easy" Employee Scheduling Solution'.

Hattrak Schedulers

Scheduling Made Easy

- 1 **Employee**
- 2 **View Options**
- 3 **Assignment Shift Times**
- 4 **Assignment Details**

5 **Supervisor Inbox – Employee Requests Pending Supervisor Action**

[Return to Menu](#)



“Hattrak Schedulers”

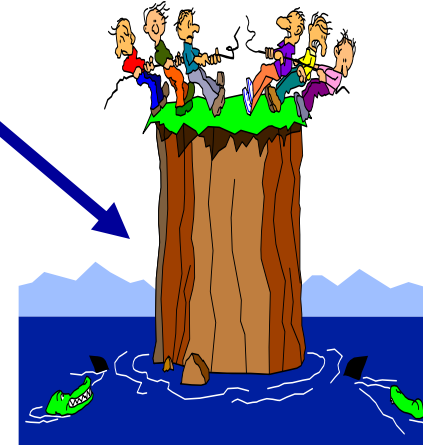
Since
1983

The Best in Employee Scheduling Software

Employee Benefits

“WIN / WIN” EMPLOYEE SHIFT SCHEDULING SOLUTIONS

Avoid Lose / Lose



- Improved employee morale
- Improved workplace safety
- Improved employee satisfaction provided with employee self service and employee self scheduling
- Improved employee satisfaction with web-based employee specific information views
- Employees make leave requests, view overtime worked history, sign up for overtime, view real-time leave balances using their own calendars and self schedule
- Less MANDATORY overtime worked

Return to Menu



“Hattrak Schedulers”

Since
1983

The Best in Employee Scheduling Software

Management Benefits

- Return on investment (ROI) in the first year
- Improve productivity
- Improve efficiency
- Reduced labor costs
- Reduce overtime costs
- Improve employee morale
- Improve workplace safety
- Dramatically reduced scheduling time for managers and clerks
- Staffing reports that demonstrate compliance with regulatory agencies and defined staffing policies
- Real-time staffing requirements management based on staffing changes and complicated labor demand factors
- Have the right staff skill “mix” for every shift and quickly identify available staff in response to last minute sick calls
- Assess staffing decisions proactively, showing the effects of decisions on labor rules, labor demand cost, and employee leave and voluntary overtime preferences
- Asses overtime, differentials, and other costs for budgeting and scheduling purposes

Return to Menu



“Hatrak Schedulers”

Since
1983

The Best in Employee Scheduling Software

Before You Purchase

Schedule a free on-line demo

Be certain that your team fully understands your employee scheduling software needs!

When it comes to selecting employee scheduling software let us help you analyze **your needs versus the software’s functionality**

To help you make a purchase decision let us help you do three things:

- Quantify how you can benefit financially using our software and related business processes (We conduct a labor supply and demand “GAP” Analysis)
- Give you a free on-line demo to help you do a “fit analysis”
- Provide you with a pricing model targeted to your budget

Contact Us At

<mailto:info@hatrak.com?subject=Requesting On-Line Demo>

Return to Menu